



# Photoelectric Sensor BGS-2S series

(Sensing distance : white 1-250mm / gray 2-250mm / black 5-200mm)

• BGS-2S25N / P / CN / CP

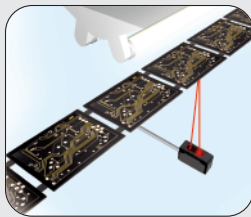
(Sensing distance : white 25-150mm / gray 25-150mm / black 25-80mm)

• BGS-2S15N / P / CN / CP

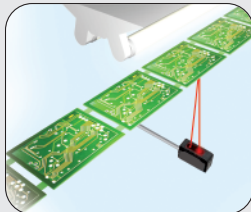
BGS type

Standard S2 type

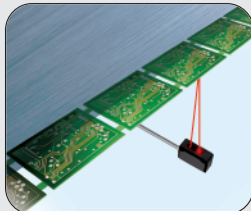
## Applications



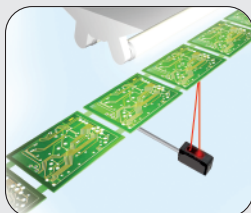
**BGS-2S25N/P**  
for black PC Boards



**BGS-2S15N/P**  
anti-inverter noise



**BGS-2S10N/P**  
for limited mounting space



**BGS-2S30NT/PT**  
for longer distance.  
Timer type (0-100msec)

### BGS-2S25 Series

- Specially designed for black PC Boards.
- M8 QD types are available.

### BGS-2S15 Series

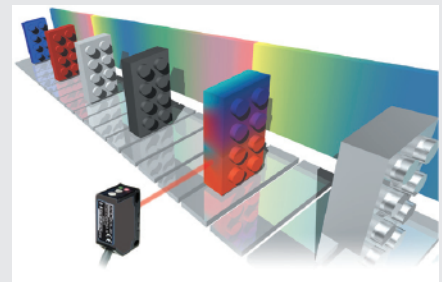
- Noise filter with anti-inverter design.  
Tolerant to environmental noise.
- Good for any PC Board except black colored.
- Standard BGS in Asia/Japan.

### BGS-2S10 series

- For limited area. Good repeatability.

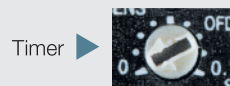
## Features

BGS type sensors are designed to detect any target regardless of the color and/or background.

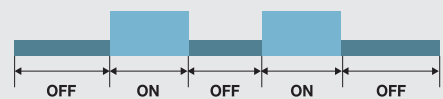


### OFF delay timer (BGS-2S30T)

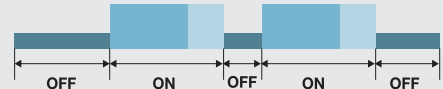
The BGS-2S30NT(PT) has a built-in Off-delay timer, 0 ~ 100 msec.



Standard output



Off-delay output



### IP67.

The one-shot molded housing results in an IP67 rating.

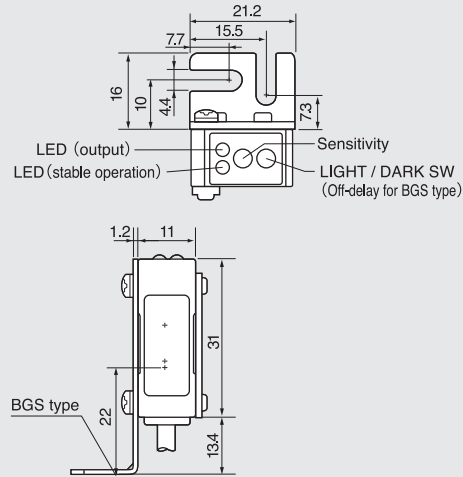


(Sensing distance : white 5-300mm / gray 10-300mm / black 15-200mm)  
 · BGS-2S30N / P / CN / CP  
 (Sensing distance : white 40-100mm / gray 40-100mm / black 20-70mm)  
 · BGS-2S10N / P / CN / CP

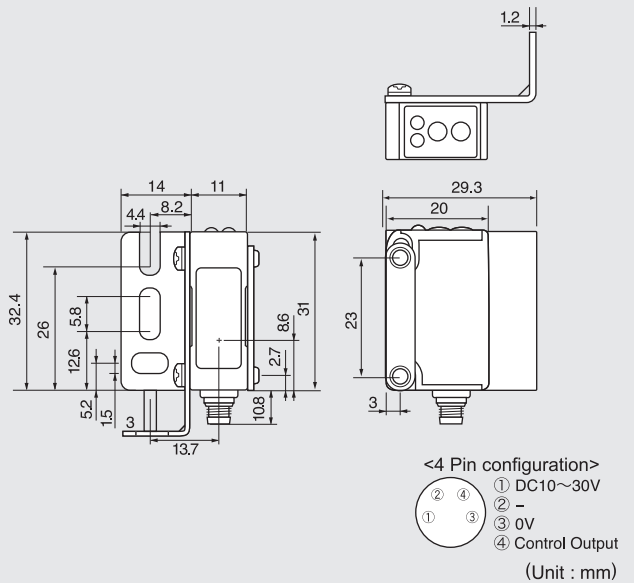
(Timer type of BGS-2S30)  
 · BGS-2S30NT / PT

## Dimensions (BGS-2S15, BGS-2S10, BGS-2S25, BGS-2S30)

### Cable Type (With Bracket BEF-W140B)



### Connector Type (With Bracket BEF-W140A)

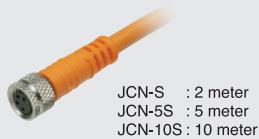


## Specifications

Cable type	BGS-2S25N / BGS-2S25P	BGS-2S15N / BGS-2S15P	BGS-2S30N / BGS-2S30P	BGS-2S10N / BGS-2S10P	BGS-2S30NT / BGS-S30PT	
Connector type	BGS-2S25CN / BGS-2S25CP	BGS-2S15CN / BGS-2S15CP	BGS-2S30CN / BGS-2S30CP	BGS-2S10CN / BGS-2S10CP		
Sensing distance	white	1 - 250mm	25 - 150mm	5 - 300mm	40 - 100mm	5 - 300mm
	grey	2 - 250mm	25 - 150mm	10 - 300mm	40 - 100mm	10 - 300mm
	black	5 - 200mm	25 - 80mm	15 - 200mm	20 - 70mm	15 - 200mm
Response time	0.5m sec Max					
Repeatability	parallel	2.0mm	1.5mm	2.5mm	1.5mm	2.5mm
	vertical	0.5mm	0.3mm	0.6mm	0.3mm	0.6mm
Operating mode	Light On, Dark On selectable					
Hysteresis	10% Max					
LED Indicator	Two - way, Green (Stable), Yellow (output)					
Light source	Red LED					
Supply voltage	DC10 - 30V incl. 10% ripple					
Conformity	JIS / C4525, CE, UL					
Power consumption	30mA Max					
Sensitivity adjustment	6 - turn trimmer					
Protection category	IEC, IP67					
Shock resistance	50G, XYZ directions					
Materials	PBT with glass (Case), PC (Lens)					
Timer	N / A		Available as option	N / A		

## Options

### JCN-S : M8 Straight type



### JCN-L : M8 L-shape type



### Protective mounting brackets LS2-S01

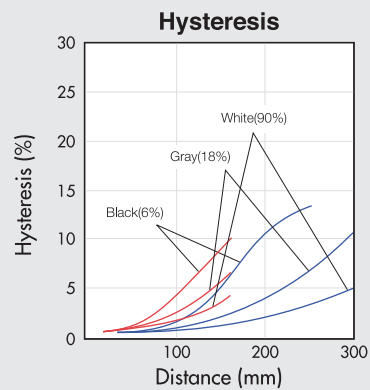
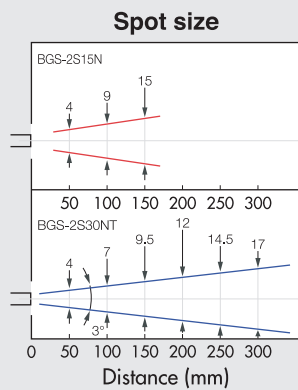
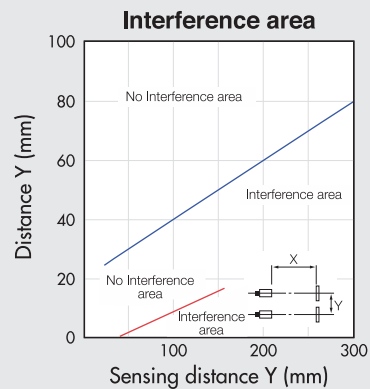
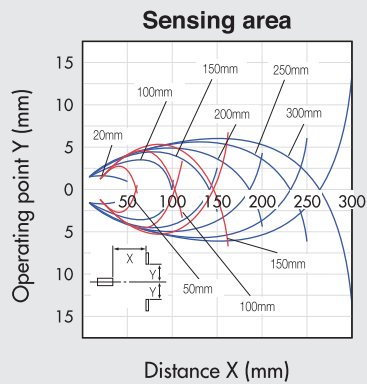


### Sensor stand PLN-1

### Fixture of Reflector PLN-1M



**Reference (typical)**



**BGS-2S15N**  
**BGS-2S30NT**

— BGS-2S15N  
 — BGS-2S30NT

